

## Universal Trainer Configuration Tool

### **Operating Instructions Version 1.0.1 – Samaritan PAD Trainer 300P / 500P**

#### **Trainer Configuration Tool**

The *Trainer Configuration Tool* is provided for the purpose of changing scenario, volume, pairing, guidelines, or language settings on the PAD Trainer device via a USB connection.

**Please Note:** Driver files are required to be installed on any PC wishing to make use of the USB facility. These will be installed along with the *Trainer Configuration Tool*

#### **Installation**

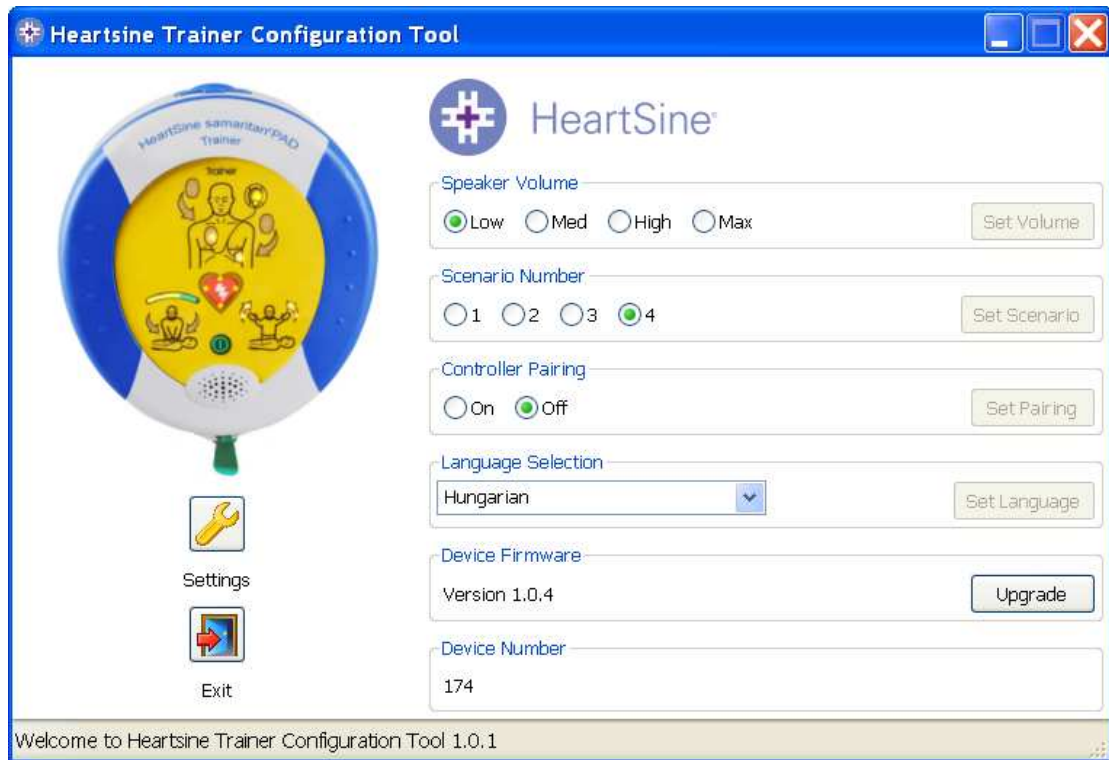
The *Trainer Configuration Tool* is installed by running the TrainerConfig\_setup.exe installation program. The user will be prompted for an installation directory to which all the necessary files will be installed.

#### **Password Protection**

The *Trainer Configuration Tool* will prompt the user for a password whenever any device settings are changed. By default this password is 'password'. It can be changed by clicking the settings button in the upper right of the initial screen.



To change any settings the appropriate option should be selected. Once selected, the relevant 'Set' button will be activated on the right hand side of the screen. Clicking this button will both change the setting and de-activate the 'Set' button until another option is chosen. On clicking any 'Set' button the user will be prompted for a password.

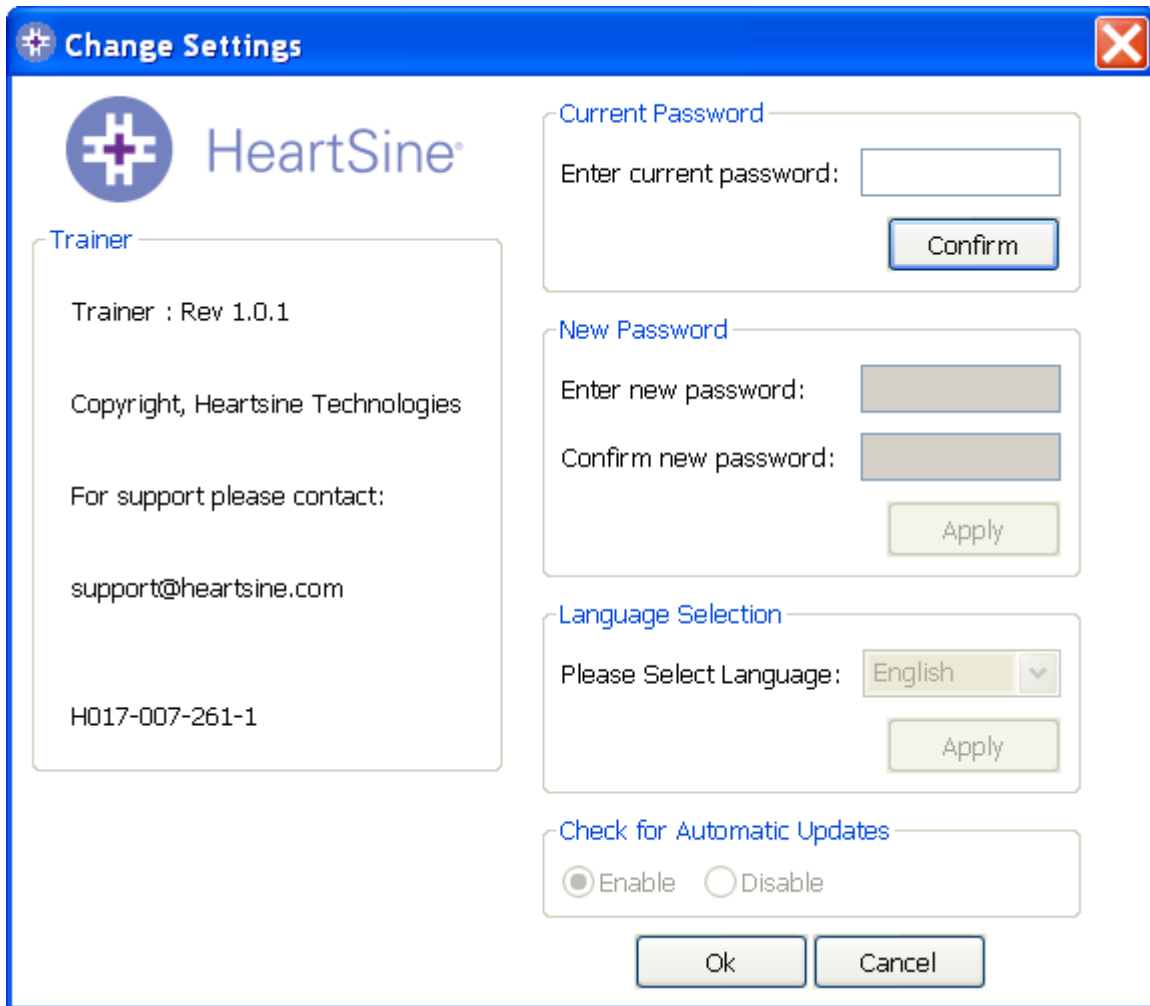


The current revision of device software will be contained within the website download. To upgrade a device click the 'Upgrade' button. If the device already contains the current revision of software the message 'Software' does not need upgraded" will be displayed.





From this main screen click on the  button. This will open the following window.



The image shows a 'Change Settings' dialog box with a blue title bar and a close button (X) in the top right corner. On the left side, there is a section titled 'Trainer' with the HeartSine logo and the following text: 'Trainer : Rev 1.0.1', 'Copyright, Heartsine Technologies', 'For support please contact:', 'support@heartsine.com', and 'H017-007-261-1'. The right side of the dialog is divided into four sections: 'Current Password' with a text input field and a 'Confirm' button; 'New Password' with two text input fields and an 'Apply' button; 'Language Selection' with a dropdown menu set to 'English' and an 'Apply' button; and 'Check for Automatic Updates' with radio buttons for 'Enable' (selected) and 'Disable'. At the bottom of the dialog are 'Ok' and 'Cancel' buttons.

Enter the current password and click “Confirm”. This will allow you to enter and confirm your new password.

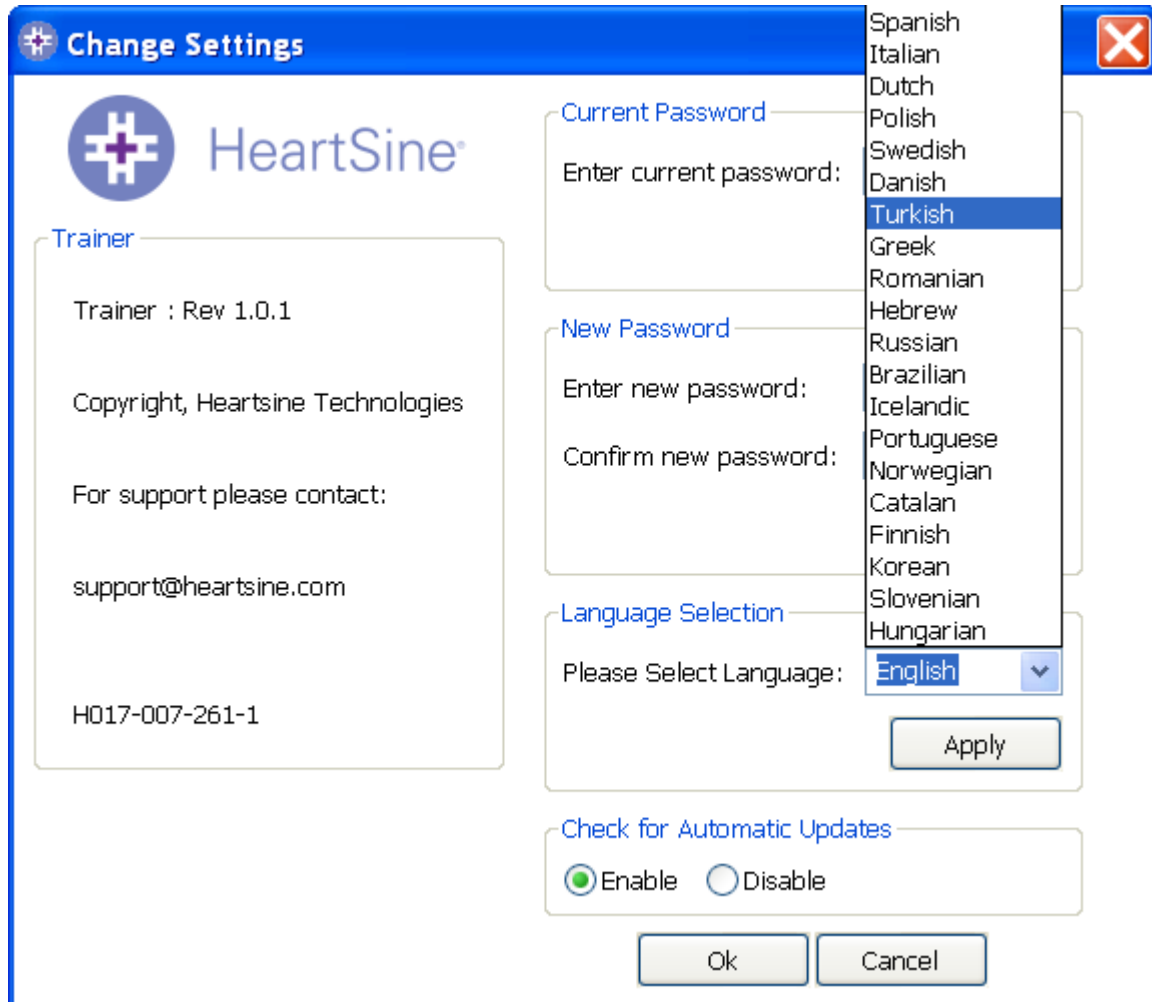
Click “Apply” to make the change. A confirmation that the password was successfully changed will appear. Click OK on this and again click “OK” in the Change Password window to exit this function.

Note that reinstalling will reset the password to the default in the software. This action however will not remove any event data that has previously been saved.

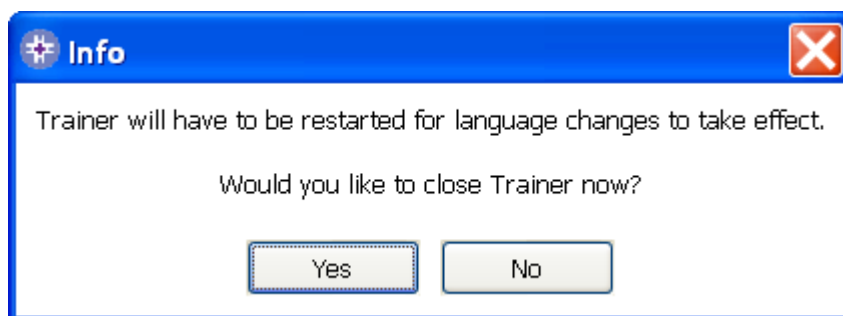


### Language selection

To choose the language of the Saver™ EVO software select the language from the drop down list and click apply.



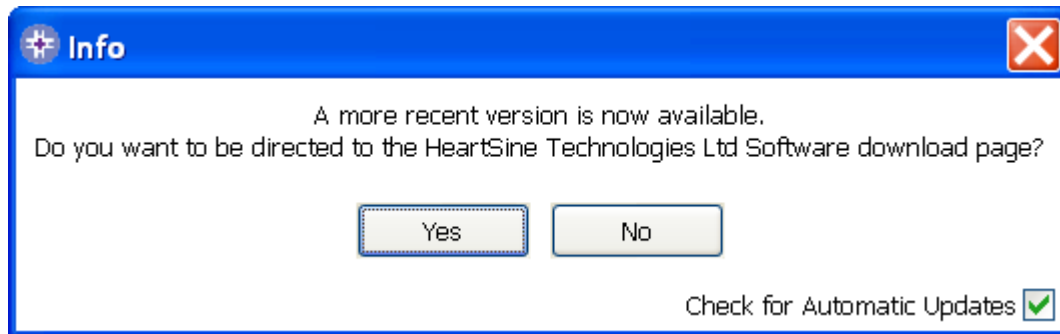
On clicking apply the following screen will appear and will have to be restarted for the language changes to take effect.





### Check for Automatic Updates

If the Enable box is selected then each time Trainer is started, it will attempt to connect with the HeartSine website to check for more recent versions Trainer. If an update is available you will be prompted with the following window when Trainer is launched.



Choose Yes or No accordingly if you want to download a newer version of Trainer.

### Remote Control – Pairing with Device

Remote control handsets are paired with a device by way of a pairing ID enabling two trainer devices to be used side by side. The remote from one device will not affect the second device and vice versa.

Since there are a limited number of ID's a user may find himself in possession of 2 devices which share the same ID and whose remote controls will then operate both devices.

Where this problem arises the user may perform the pairing procedure detailed below.

This procedure will pair together a remote and device using a randomly selected ID.

### Pairing Procedure

- Plug the supplied USB cable into the device
- Using the Universal Trainer Configuration tool enable "Controller Pairing"
- Disconnect the USB cable and turn ON the device with the GREEN ON/OFF button. The chest LEDs will illuminate indicating pairing mode.
- Remove the handheld remote battery cover
- Hold down the remote RED OFF button and lift one of the batteries out.
- Replace the battery and the remote will pair with the device – 12 audible beeps will be heard if successful
- Release the OFF button and replace the battery cover once the beeps begin
- When the beeps have finished press the RED OFF button again
- The Trainer Device will power OFF
- The pairing procedure is now complete

**Please Note:** Inserting the batteries into the handheld remote whilst pressing the RED OFF button will cause the remote to take a new transmission ID. If this occurs accidentally when the device is not in pairing mode it will be necessary to complete the above procedure in full to pair the device and remote.

HeartSine Technical Support:  
Americas: 1-215-860-8100, ext 107  
Email: info@heartsine.com  
Europe/International: 00442890 939 404  
Email: support@heartsine.com